

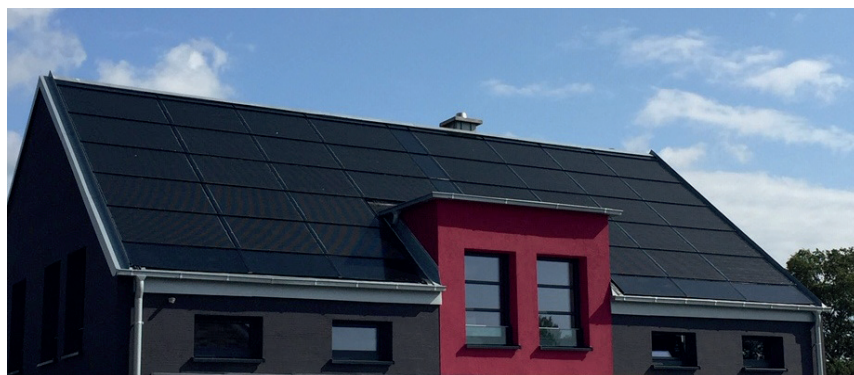
# Solrif Blind module

**For a complete coverage of the roof  
with homogeneous appearance**

**The aesthetically perfect supplement to the aleo  
PV modules S83sol and S81sol**

**Ideal for hipped roofs  
or for chimneys and dormers**

**Easy to handle and easy to cut to size**



Example picture

#### BASIC DATA BLIND MODULE

|                         |      |   |
|-------------------------|------|---|
| Length x width x height | [mm] | 1048 x 1759 x 17 (grid dimension 1016 x 1741)   |
| Weight                  | [kg] | 17  |
| basic plate             |      | 3 mm aluminium<br>(EN-AW 575 , state H22,<br>according to EN485-1,2,4; EN573-3; EN15088 ) |
| Plattenfarbe            |      | matt black, lacquered   |
| Rahmenmaterial          |      | Al alloy, black, powder-coated  |

#### PROCESSING INFORMATION:

To avoid scratches or damage on the frontside (fully black lacquered), cut the blind module with the cutting tool (saw or similar) on the backside of the blind module (side not lacquered).