

MODULES OVERVIEW

Solar Competence. Made in Germany. Since 2001.

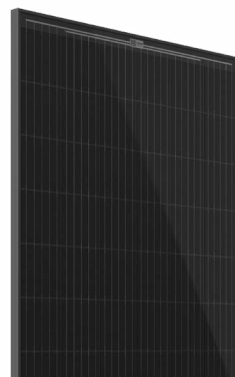
HIGH EFFICIENCY



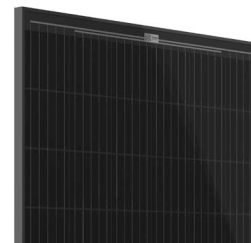
X63 Premium
325 - 333 W



X61 Premium
255-265 W



X83 Premium
320 -330 W



X81 Premium
250-260W



P23
320-325 W

NUMBER OF CELLS	60	48	60	48
CELL MATERIAL	Monokristalline Si, PERC	Monokristalline Si, PERC	Monokristalline Si, PERC	Monokristalline Si, PERC
LENGTH X WIDTH X HEIGHT [MM]	1716 x 1023 x 42	1387 x 1023 x 42	1716 x 1023 x 42	1387 x 1023 x 42
WEIGHT [KG]	19,5	16	19,5	16
CONNECTORS	MC4	MC4	MC4	MC4
MAX. SYSTEM VOLTAGE [Vdc]	1000	1000	1000	1000
MAX. MODULE PRESSURE LOAD ¹ [Pa]	8000	8000	8000	8000
MAX. MODULE SUCTION LOAD ¹ [Pa]	2400	2400	2400	2400
CLASSIFICATION RANGE [W]	0/ up to +6,99	0/+4,99	0/ up to +4,99	0/+4,99
THE BEST GUARANTEE PACKAGE IN THE SOLAR INDUSTRY²				
+ POWER GUARANTEE	25 years, linear	25 years, linear	25 years, linear	25 years, linear
+ PRODUCT GUARANTEE	25 years	25 years	25 years	25 years
+ 100 % COST RECOVERY FOR DEFECTS	Inclusive	Inclusive	Inclusive	Inclusive

PROJECT MODUL

NUMBER OF CELLS	60
CELL MATERIAL	Monokristalline Si, PERC Optional: bifacial cells
LENGTH X WIDTH X HEIGHT [MM]	1716 x 1023 x 35
WEIGHT [KG]	19,3
CONNECTORS	MC4
MAX. SYSTEM VOLTAGE [Vdc]	1000
MAX. MODULE PRESSURE LOAD ¹ [Pa]	5400
MAX. MODULE SUCTION LOAD ¹ [Pa]	2400
CLASSIFICATION RANGE [W]	0/+4,99
THE BEST GUARANTEE PACKAGE IN THE SOLAR INDUSTRY²	
+ POWER GUARANTEE	25 years, linear
+ PRODUCT GUARANTEE	12, optional 25 years
+ 100 % COST RECOVERY FOR DEFECTS	Inclusive

¹: Mechanical load according to IEC/EN 61215 | Please observe the mounting conditions in the installation manual.

²: Detailed information on our product and performance guarantees. Accessible online www.aleo-solar.com | Subject to errors and updates.

QUALITY UNDER HAND AND SEAL



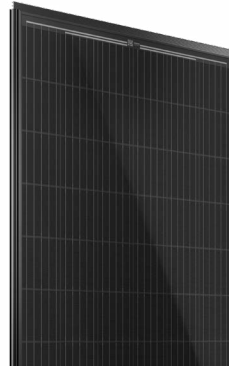
MODULES OVERVIEW

Solar Competence. Made in Germany. Since 2001.

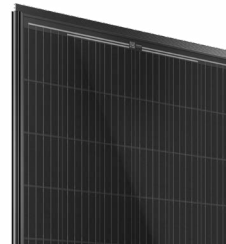
BUILDING INTEGRATED PHOTOVOLTAIC



Elegante
200 W



S83sol Premium
320-330 W



S81sol Premium
250-260 W

USE	Photovoltaic safety glass with DIBt authorization	Roof Integration	Roof Integration
NUMBER OF CELLS	60	60	48
CELL MATERIAL	Monokristalline Si, PERC Optional: bifacial cells	Monokristalline Si, PERC	Monokristalline Si, PERC
LENGTH X WIDTH X HEIGHT [MM]	950 x 1600 x 9 ³	1048 x 1759 x 36 (grid dimension 1016 x 1741)	1430 x 1048 x 36 (grid dimension 1016 x 1412)
WEIGHT [KG]	31,5	19,5	16
CONNECTORS	2 Tyco wing edge	MC4	MC4
MAX. SYSTEM VOLTAGE [Vdc]	1000	1000	1000
MAX. MODULE PRESSURE LOAD ¹ [Pa]	7500	5400	5400
MAX. MODULE SUCTION LOAD ¹ [Pa]	5400	2400	2400
CLASSIFICATION RANGE [W]	0/+9,99	0/ bis zu +4,99	0/+4,99
WEITERE BIPV LÖSUNGEN	Available as insulating glass	Available as (cut-to-size) dummy modules	

THE BEST GUARANTEE PACKAGE IN THE SOLAR INDUSTRY²

+ POWER GUARANTEE	30 years, linear	25 years, linear	25 years, linear
+ PRODUCT GUARANTEE	15, optional 30 years	25 years	25 years
+ 100 % COST RECOVERY FOR DEFECTS	Inclusive	Inclusive	Inclusive

GERMAN TECHNOLOGY AND MANUFACTURING. FOR HIGH-QUALITY SOLAR MODULES.

Rely on our expertise and „Made in Germany“ since **2001**. The highly efficient aleo modules are designed and manufactured with durability in mind.

OUR QUALITY IS CERTIFIED

- + 100% diodes tested
- + Salt mist corrosion resistance
- + Ammonia corrosion resistance
- + Hail resistance
- + Frei von Schneckenspuren
- + PID-frei
- + ISO 9001
- + ISO 50001
- + ISO 14001
- + BS OHSAS 18001



WE TEST WAY BEYOND STANDARD

In order to simulate the expected lifetime of modules, international standards are not stringent enough. That's why, over the years, we have set our own standards that go much further than any official requirement. We test at least every new material twice as much the IEC standards and even far beyond when we consider it necessary

- + 2 x 100% EL-Tests
- + 3 x IEC Klimakammerprüfung

HIGHLY EFFICIENT PERC CELLS

With our innovative PERC technology with reduced LID behaviour, we can guarantee above-average operating results.

100% COST RECOVERY FOR DEFECTS

If our modules show material and processing defects caused by the manufacturer, or should the power output be below the guaranteed values, we will bear the following costs within the framework of the conditions stated in the guarantee certificate:

- + Reasonable transport costs for the delivery of replacement modules
- + Return of repaired or replaced modules
- + Costs related to the installation, extension or reinstallation of the modules

¹ Mechanical load according to IEC/EN 61215 | Please observe the mounting conditions in the installation manual.

² Detailed information on our product and performance guarantees. Accessible online www.aleo-solar.com | Subject to errors and updates.

³ 12,5 mm high junction box