

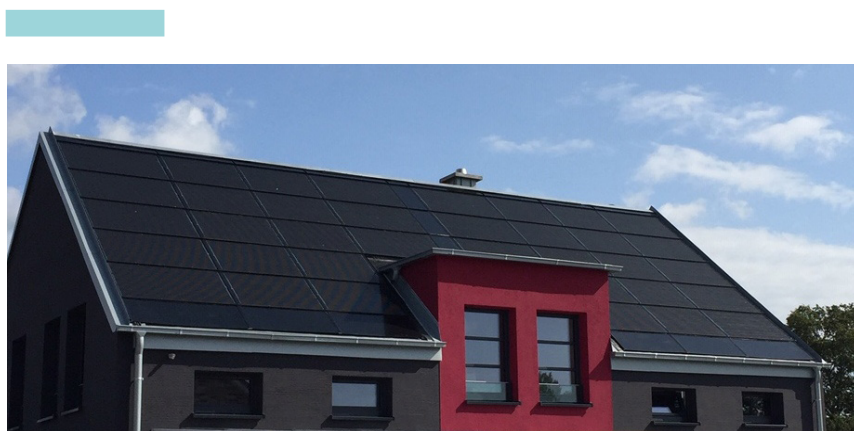
Solrif Blind module

**For a complete coverage of the roof
with homogeneous appearance**

**The aesthetically perfect supplement to the aleo
PV modules S83sol and S81sol**

**Ideal for hipped roofs
or for chimneys and dormers**

Easy to handle and easy to cut to size



Example picture

BASIC DATA BLIND MODULE	S83 FORMAT	S81 FORMAT
Length x width x height [mm] (grid dimension)	1048 x 1759 x 17 (1016 x 1741)	1048 x 1430 x 36 (1016 x 1412)
Weight [kg]	17	14
basic plate	3 mm aluminium (EN-AW 575 , state H22, according to EN485-1,2,4; EN573-3; EN15088)	
blind module colour	matt black, lacquered	
frame material	Al alloy, black, powder-coated	

PROCESSING INFORMATION:

To avoid scratches or damage on the frontside (fully black lacquered), make the cut with the cutting tool (saw or similar) on the backside of the blind module (side not lacquered).